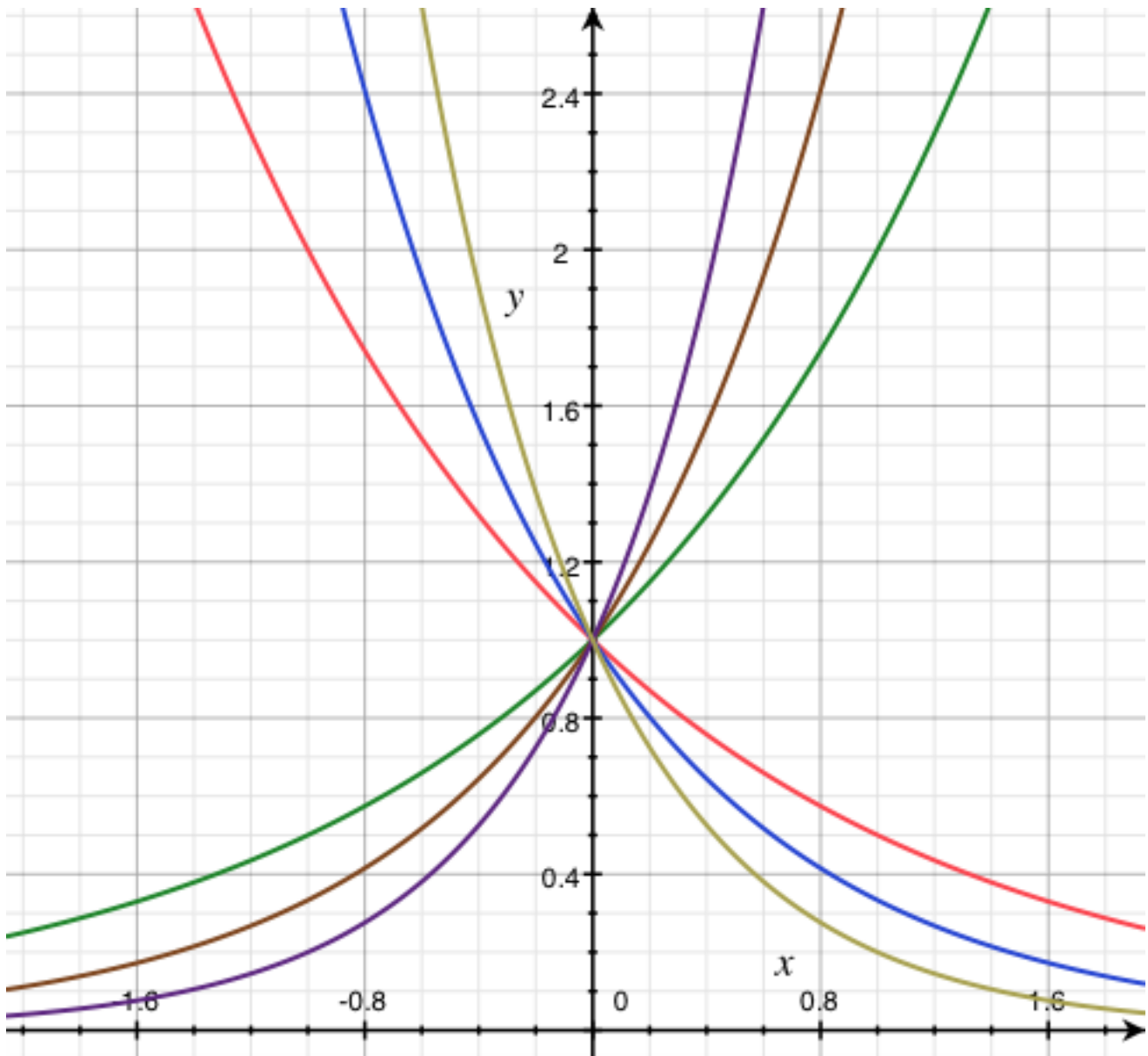
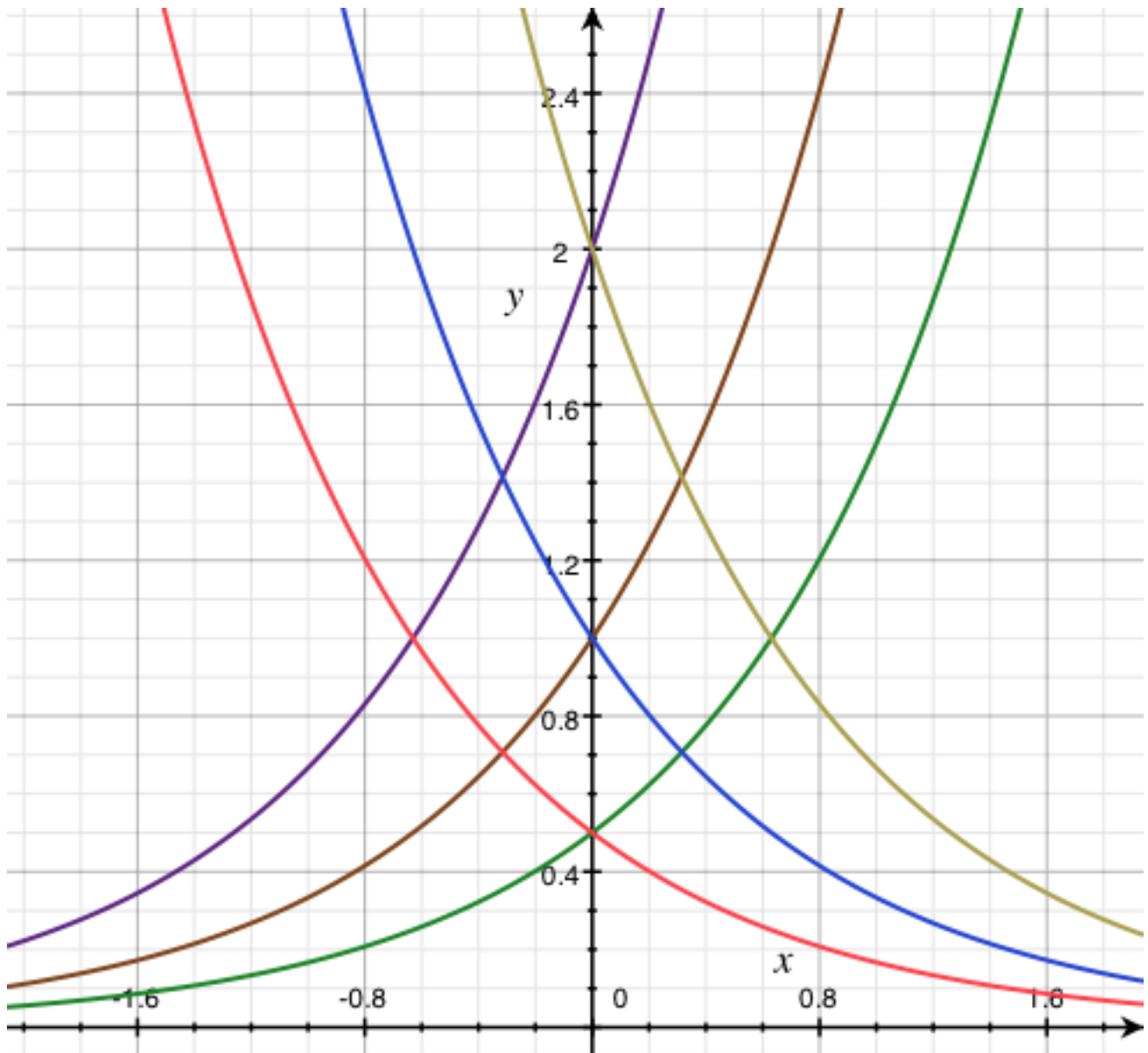


Exponential Graphs 1



These graphs represent equations of the type $y = b^x$. For each one, what is b ?

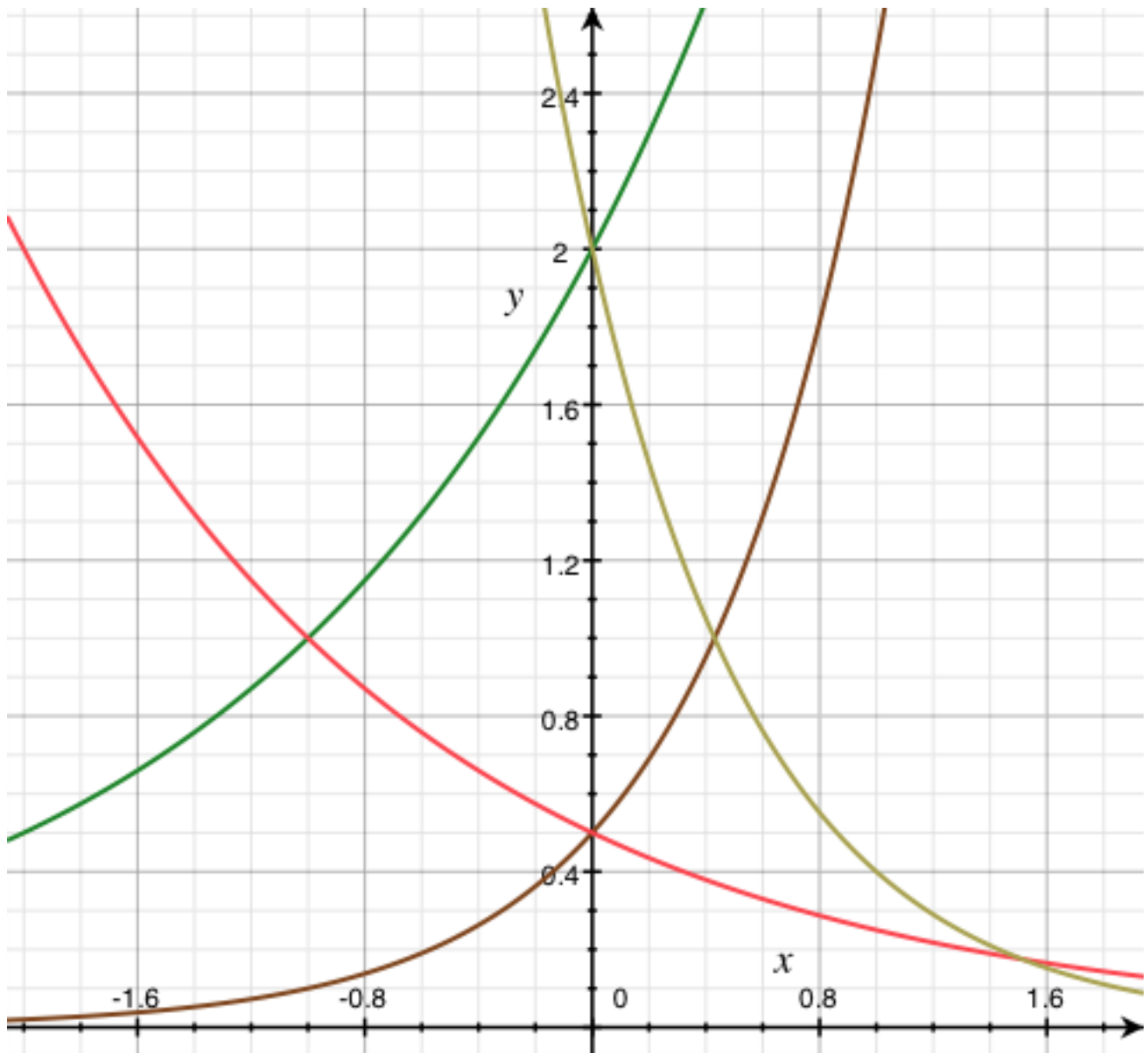
Exponential Graphs 2



These graphs represent equations of the type $y = a \cdot 3^x$, or $y = a \cdot (1/3)^x$.

For each one, what is a ?, what is b ?

Exponential Graphs 3



These graphs represent equations of the type $y = a \cdot b^x$.

For each one, what is a ?, what is b ?