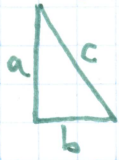


Draw a right triangle on graph paper, like this:

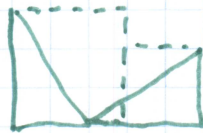


Mine has legs 2 and 3.
Yours should be different.

Now copy your triangle, like this:

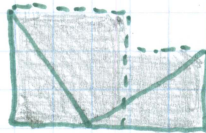


Make squares:

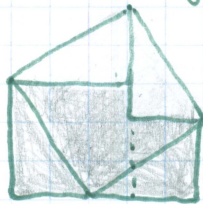


Shade the squares in pencil:

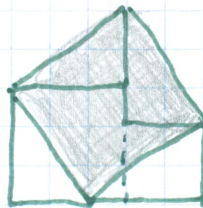
What is their area
in terms of a and b ?



Now make two more copies of your triangle, like this:



Erase the shading on the old triangles, and shade in the new:



The shaded area is what kind of shape?

What is its area? (You can find the area two ways: in terms of c ,
and in terms of a and b .)